

# SPECTROCHECK

Stationary Metal Analyzer

Amazingly affordable metal analysis  
with rock-solid reliability and quality





# SPECTROCHECK

The highest performance and dependability  
at the lowest possible price

The SPECTROCHECK stationary metal analyzer is specifically designed to meet the performance requirements — and the budgets — of small and medium-size foundries and machining operations. This high-quality, compact, affordable instrument is ideal for routine analysis of elemental content in iron-, aluminum-, and copper-based metals. Companies using SPECTROCHECK can assure their customers that their metals have been reliably tested to meet the most rigorous specifications for content and quality.



## EXPERIENCE AND QUALITY

SPECTROCHECK is designed in Germany by experienced, talented engineers to the highest standards of quality, reliability, and performance. It's offered by the region's acknowledged spectrometry leader via an extensive support structure with a large installed base. Results: worry-free analysis, ultra-reliable results, and long-term availability.

## SIMPLICITY AND EASE OF USE

All the instrument's features, from its new spark stand to its modular, plug-in functionality and uncomplicated software interface, are thoughtfully engineered for maximum usability. So SPECTROCHECK is simple to operate and easy to maintain — even for operators without specialized knowledge. For instance, via step-by-step instructions and a commissioning video guide.

## HIGH VALUE AND LOW COST

There's never been a metal analyzer that offers so much performance at so little cost. SPECTROCHECK comes with an amazingly low initial purchase price. And its low cost of ownership continues with features such as plug-in functionality, so users pay only for what they need, or iCAL logic, which eliminates constant expensive recalibrations. No wonder SPECTROCHECK offers the best price/performance ratio on the market.



# SPECTROCHECK advantages

Solid German-engineered build quality for stable, reliable operation

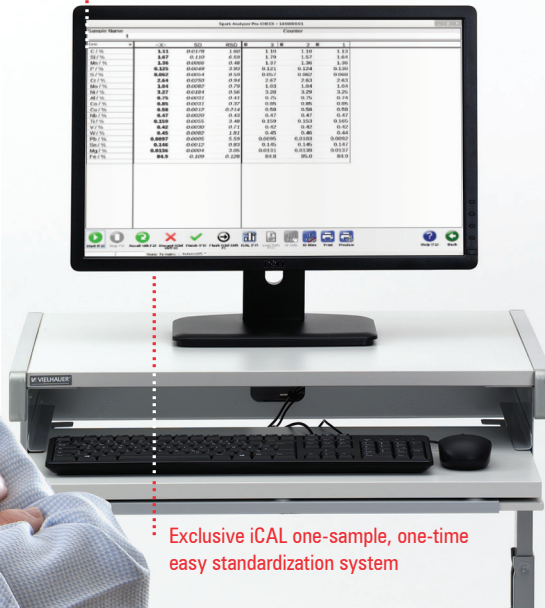
Greatly simplified, self-explanatory software with clear layout, few buttons, no menus

Newly designed optical system with optimized performance for foundry and machining operations

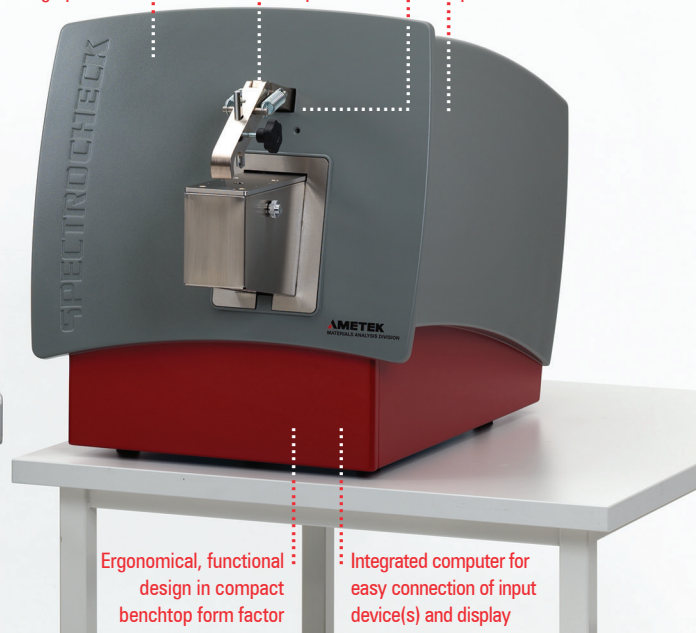
Easy, safe access to components

New spark stand designed for easy use and maintenance

Newly designed plasma generator for highest precision



Exclusive iCAL one-sample, one-time easy standardization system



Ergonomical, functional design in compact benchtop form factor

Integrated computer for easy connection of input device(s) and display

## INNOVATIVE OPTICS

No compromises here: SPECTROCHECK takes a breakthrough, clean-slate approach, with new patent-pending optical technology. This combines a compact multiplex optics polychromator with selected wavelength image feedback technology (SWIFT). The optical chamber is isolated and temperature-maintained for measurement stability, and argon-purged for light transmission.

All this helps deliver precise performance across the entire application-relevant spectral range. SPECTROCHECK is optimized for the elements found in common foundry metals. Thus it minimizes spectral interferences, maintains high stability — and enables better separation of neighboring spectra in line-rich analyses.

## SIMPLIFIED SOFTWARE

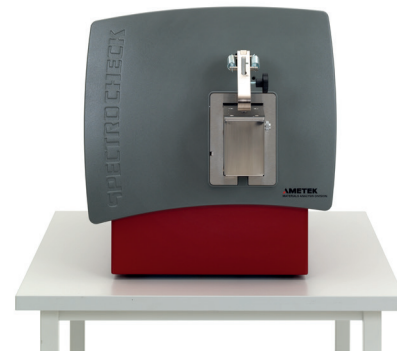
A brand-new interface presents a clear, user-friendly screen that runs icon-based, menu-free operational routines. SPECTROCHECK is easy to learn.

In addition, a unique new plug-in approach lets users customize the functionality they want. They can purchase separate software modules for control-standard or type-standard samples, grade identification, and so on. They simply add additional modules as their needs evolve. Plug-ins maximize affordability: customers pay only for the configuration(s) they choose. Above all, plug-ins create an interface that's much easier to use.

This new, radically simple SPECTROCHECK software eliminates days of complicated training. Users get fast, easy startup and intuitive operation.



# SPECTROCHECK and more



## SUPPORTIVE SERVICE

Foundries must rely on constantly available analysis so they can maintain the fastest possible pace of productivity. To ensure that SPECTROCHECK analyzers are always ready when needed, SPECTRO offers the AMECARE Performance Services program.

This program fields more than 200 service engineers in 50 countries — with more than 80 dedicated SPECTRO service experts in India and China alone. Each delivers high-value, customized assistance to help sustain optimum performance and the longest possible life for each SPECTROCHECK instrument. Available AMECARE support includes protective maintenance programs, applications solutions, expert consultation, and targeted training.

## COMPLETE LINE

The high-performance yet affordable SPECTROCHECK takes its place among today's most comprehensive suite of advanced elemental analyzers. For unsurpassed metal measurement, it joins SPECTRO's flagship SPECTROLAB, a market leader for ultra-precise analysis, as well as the best-selling SPECTROMAXx stationary metal analyzer and the mobile SPECTROTEST arc spark instrument.

Whatever the product, SPECTRO's more than 30 years of experience in elemental analysis — along with its unparalleled record of technical innovation and excellence — ensures the best results in the business.

## www.spectro.com

### GERMANY

SPECTRO Analytical Instruments GmbH  
Boschstrasse 10  
D-47533 Kleve  
Tel. +49.2821.892.0  
spectro.sales@ametek.com



### U.S.A.


SPECTRO Analytical Instruments Inc.  
50 Fordham Rd  
Wilmington 01887, MA  
Tel. +1 800 548 5809  
+1 201 642 3000  
spectro-usa.sales@ametek.com

### CHINA

AMETEK Commercial  
Enterprise (Shanghai) CO., LTD.  
Part A1, A4 2nd Floor Building No. 1 Plot Section  
No. 526 Fute 3rd Road East; Pilot Free Trade Zone  
200131 Shanghai  
Tel. +86.400.022.7699  
spectro-china.sales@ametek.com

### Subsidiaries:

► **FRANCE:** Tel. +33.1.3068.8970, spectro-france.sales@ametek.com ► **GREAT BRITAIN:** Tel. +44.1162.462.950, spectro-uk.sales@ametek.com  
► **INDIA:** Tel. +91.22.6196.8200, sales.spectroindia@ametek.com ► **ITALY:** Tel. +39.02.94693.1, spectro-italy.sales@ametek.com  
► **JAPAN:** Tel. +81.3.6809.2405, spectro-japan.info@ametek.co.jp ► **SOUTH AFRICA:** Tel. +27.11.979.4241, spectro-za.sales@ametek.com

SPECTRO operates worldwide and is present in more than 50 countries. For SPECTRO near you, please visit [www.spectro.com/worldwide](http://www.spectro.com/worldwide)  
© 2015 AMETEK Inc., all rights reserved, subject to technical modifications • A-18, Rev. 0 • 80902325 • Photos: SPECTRO, Adobe Stock  
Registered trademarks of SPECTRO Analytical Instruments GmbH •  SPECTRO: USA (3,645,267); EU (005673694); "SPECTRO": EU (009693763);